



Map7



Coleford
Neighbourhood
Development Plan
MAPS

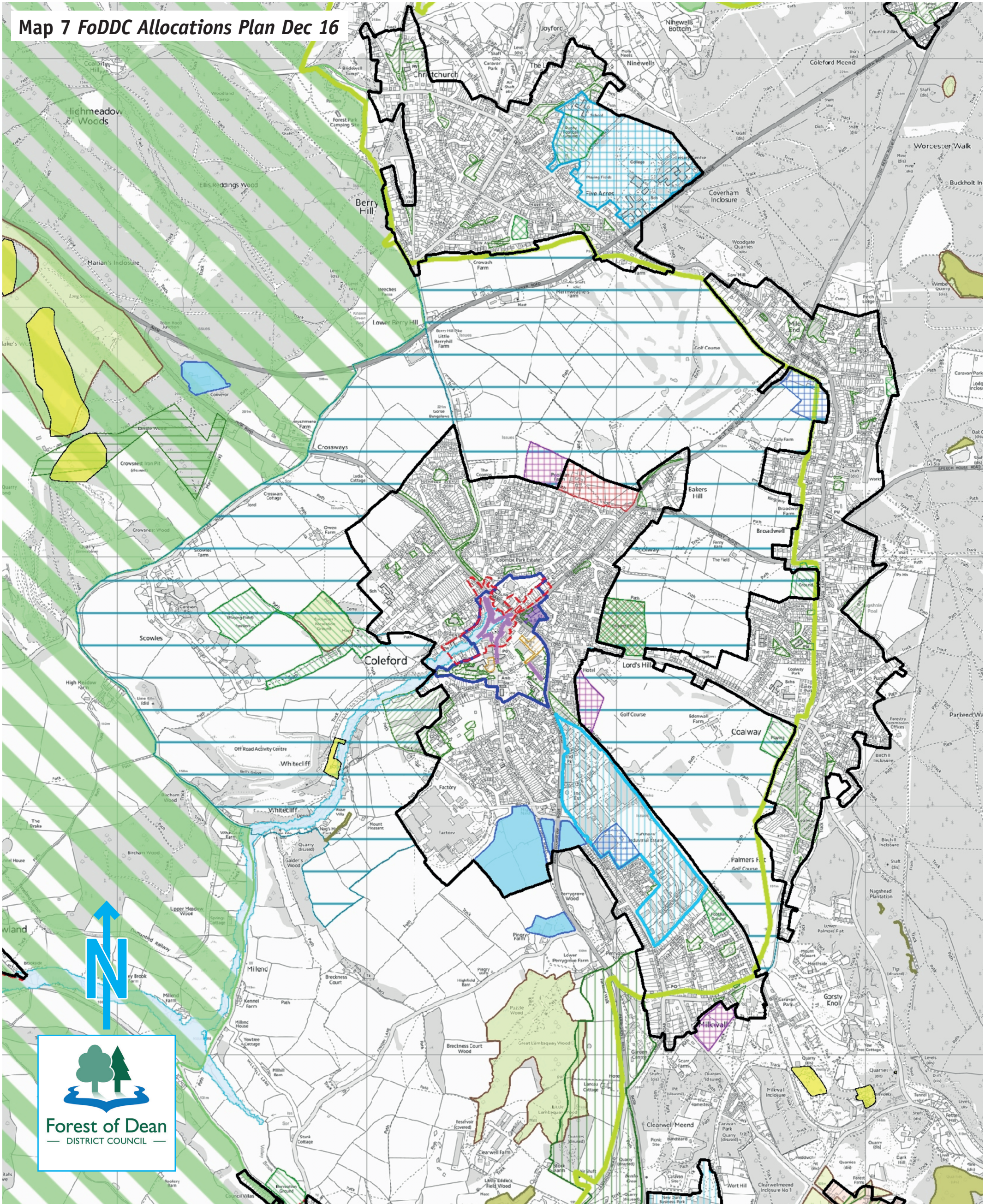
2017

Map 7
*FoDDC Allocations
Plan Dec 16*

7



Map 7 FoDDC Allocations Plan Dec 16



- | | | | |
|--|--|--|------------------------------------|
| FoD District Boundary 2015P | Town Centre Boundary | Important Open Area | Forest Statutory Boundary |
| Cycle Paths | Housing Allocations | Important Open Area & Recreation Use | Locally Distinctive Area |
| Gypsy & Travelling Showpeoples Sites | September 2016 Proposals | Environmental Improvements | Locally Valued Landscape |
| Northern Quarter AAP | December 2016 Proposals | Ancient Monuments | Community Uses |
| Settlement Boundary | Local Policy Area | Herefordshire & Gloucestershire Canal Reinstatement | Special Areas of Conservation |
| Railway Land Protected For Dean Forest Railway | Retail Use Allocations | Herefordshire & Gloucestershire Canal Feb 2015 | Special Protection Areas |
| Lydney Town Centre Road Safeguarding | Recreation Space | Herefordshire & Gloucestershire Canal policies map additions December 2016 | Historic Nationally Important SSSI |
| Conservation Area Boundary | New Recreation Space | Herefordshire & Gloucestershire Canal policies map additions December 2016 | FoD Key Wildlife Sites May 2016 |
| Mixed Development Sites (Housing & Employment) | New Recreation Space December 2016 | Regionally Important Geological Sites | Hartpur College Policy Area |
| Active Town Centre Frontage | Intensification Of Employment Generating Use | Employment Generating Uses | A.O.N.B. |
| | | | Floodzone3 |